

midi ingenierie

application note

**Connection and configuration
of Lantronix
Ethernet/RS232-RS485 interface
For Midi Ingénierie motion controller**



Date : 18/03/2013
Reference : mi_v3_an08_en.pdf
MI . Ref : ELE1940896.doc
Revision : 3
Author : E.LOPEZ
<http://www.midi-ingenierie.com>



Sommaire

1.	Module Connection - Parameters configuration access	3
1.1.	General	3
1.2.	Connection to the Ethernet Interface	3
1.3.	Access to the network interface module configuration	3
1.4.	Saving configuration	4
2.	Downloading the "DeviceInstaller.exe" on the LANTRONIX web site.....	5
3.	Module Configuration	7
3.1.	Launching	7
3.2.	Module detection.....	7
3.3.	Access to the configuration procedure	8
3.4.	Module configuration	9

Version	1.0	10/09/2012	original document
Version	1.1	14/09/2012	add the Connection to the Ethernet interface chapter
Version	1.2	02/01/2013	add using MonMiCom.exe on I.3§ to know IP address add I.4 § Saving configuration common document for RS232 et RS485



1. Module Connection - Parameters configuration access

1.1. General

The Ethernet interface of the BMAC chassis is equipped with an **Ethernet/RS232 or Ethernet/RS485** gateway from **LANTRONIX** that you have to set-up according to your network parameters...
The default configuration is the following:

- **Automatic IP using DHCP and AutoIP**
- **38400 bauds serial link speed.**
- **CP0 is General Purpose for RS232 link and RS485 TxEnable for RS485 link**

1.2. Connection to the Ethernet Interface

If your network is using a DHCP server or AUTO IP (automatic IP allocation), the module will be automatically recognized

If not, you will have to establish a local connection between the PC and the module using the AutoIP.

In that case the PC and the module will use automatically generated IP address (**169.254.xx.xx**)

To assure a successful local connection, you must first switch off the module, then connect the cable between the module and the PC, finally switch on the module before to access the configuration application (MonMicom or DeviceInstaller)

1.3. Access to the network interface module configuration

Two possibilities:

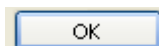
- 1. If you know the IP address,** you can directly access the integrated web server with your internet navigator.

Directly hit the IP address in your Internet navigator.

Example :



If password requested, directly hit



After connecting to the internal web page refer to chapter: III **.4 Module Configuration.**

- 2. If you don't know the IP address:**

- **then install the "DeviceInstaller.exe"** on the LANTRONIX web site, then follow the next chapters instructions.



- **or** use the **MonMiCom.exe** Midi ingenierie utility to know the **IP address** using the **Network Topology** tool, then access the integrated web server page with your internet navigator. (see above §)

1.4. Saving configuration

After doing module configuration, do not forget the last step **Apply Settings** to save the new parameters.



2. Downloading the “DeviceInstaller.exe” on the LANTRONIX web site

For any configuration change, you need the Device **Server Configuration Manager** available on www.lantronix.com

Lantronix > Products > Device Networking > Utilities and Tools > DeviceInstaller™ - Windows Internet Explorer

http://www.lantronix.com/device-networking/utilities-tools/device-installer.html

Partners | Careers | Investors | SHARE

Products Solutions Support Newsroom Resources About Us How to Buy

Home > Device Networking > Software & Utilities > DeviceInstaller™

Device Networking

- Embedded Networking
- External Networking
- Wireless Networking
- Ethernet Switches
- Software & Utilities

IT Management

- xPrintServer
- Management Platform
- Console Servers
- KVM-over-IP
- Remote Power Management
- Branch Office Management
- Product Index

DeviceInstaller™

The Lantronix DeviceInstaller is a Windows-based GUI application that provides an easy way to install and configure specific Lantronix device server products.

Using DeviceInstaller, you can:

- Load the appropriate firmware
- Assign IP & other network specific addresses
- Load custom web pages
- Enable web-based configuration of the device server
- Ping or query the attached device(s) over the network
- Allow Telnet communication with the device(s)
- View specific device data files

Note: The DST and APS Configuration Utilities are now part of DeviceInstaller.

Download the latest version of **DeviceInstaller**.

DeviceInstaller Online Help
DOWNLOAD Software
Documentation
Latest Firmware

Support

Tech Support

- Knowledgebase / FAQs
- Ask A Question
- Live Chat
- Contact Us
- Documentation
- Firmware / Downloads
- Product Bulletins
- Discontinued Products
- Online Product Tutorials
- Cable / Adaptor Lookup
- Warranty Return, Policy & Procedure
- Product Registration
- Extended Support & Services
- Spares Program
- FTP Site

Customer Support

- P.O. Requirements

Log in | Sign up

Support Home **Answers** Ask a Question My Stuff

Latest version of DeviceInstaller

Published 01/22/2002 12:59 PM | Updated 08/24/2012 10:27 AM

What is the latest version of DeviceInstaller?

The current version of DeviceInstaller is **4.3.0.6**. Click on the FTP or HTTP link in the table below to download the **Setup** application and **Release Notes**.

Product	Download via FTP	Download via HTTP	Comment
Web Setup application for Windows (1.3 MB)	FTP	HTTP	Requires internet access
Release Notes	FTP	HTTP	

(Requirements see below)

If you need a stand-alone DeviceInstaller setup application for a host with no internet access, you can download it here:

Product	Download via FTP	Download via HTTP	Comment
Stand-alone DeviceInstaller Setup application for Windows (91 MB)	FTP	HTTP	No internet access required to install

(Requirements see below)



For further information you can download the **XPort User Guide: XPort_UG.pdf**

The screenshot shows a web browser window displaying the Lantronix website. The browser's address bar shows the URL: <http://www.lantronix.com/support/downloads/?p=XPORT>. The website's navigation bar includes links for Products, Solutions, Support (highlighted), Newsroom, Resources, About Us, and How to Buy. The main content area is titled "Downloads & Documentation" and features a section for "XPort®". Under the "Documentation" heading, a list of PDF files is provided, with "XPort - User Guide (PDF)" highlighted by a red box. The list includes:

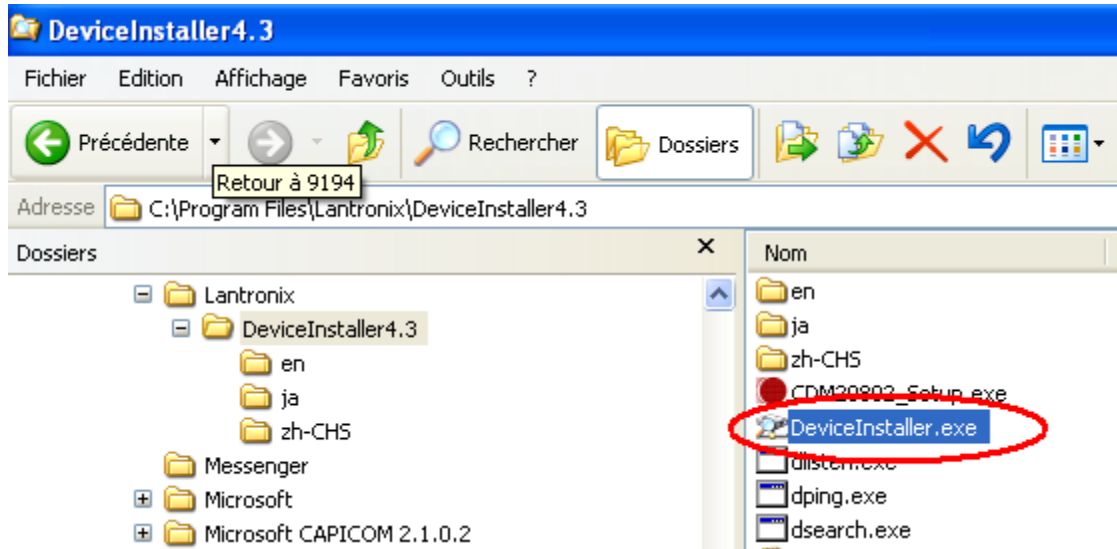
- XPort - Product Brief (PDF)
- XPort - Data Sheet (PDF)
- XPort - User Guide (PDF)
- XPort - Quick Start Guide (PDF)
- XPort - Evaluation Kit Contents (PDF)



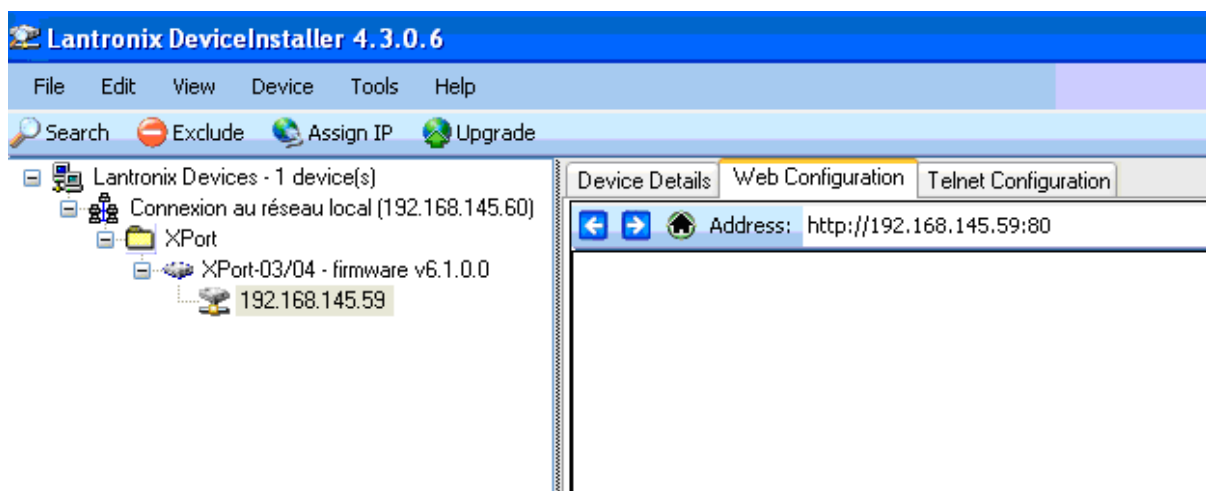
3. Module Configuration

3.1. Launching



After correct installation, start a DeviceInstaller session.



3.2. Module detection



The configuration utility will automatically detect the connected XPort modules.

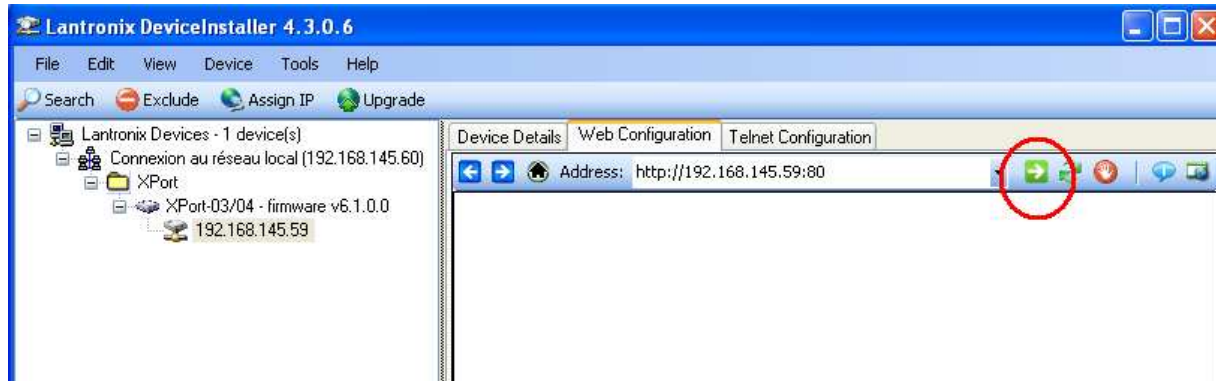
In the left tab develop  XPort and  XPort-03/04 - firmware v6.1.0.0

Double click on the IP address of the module.



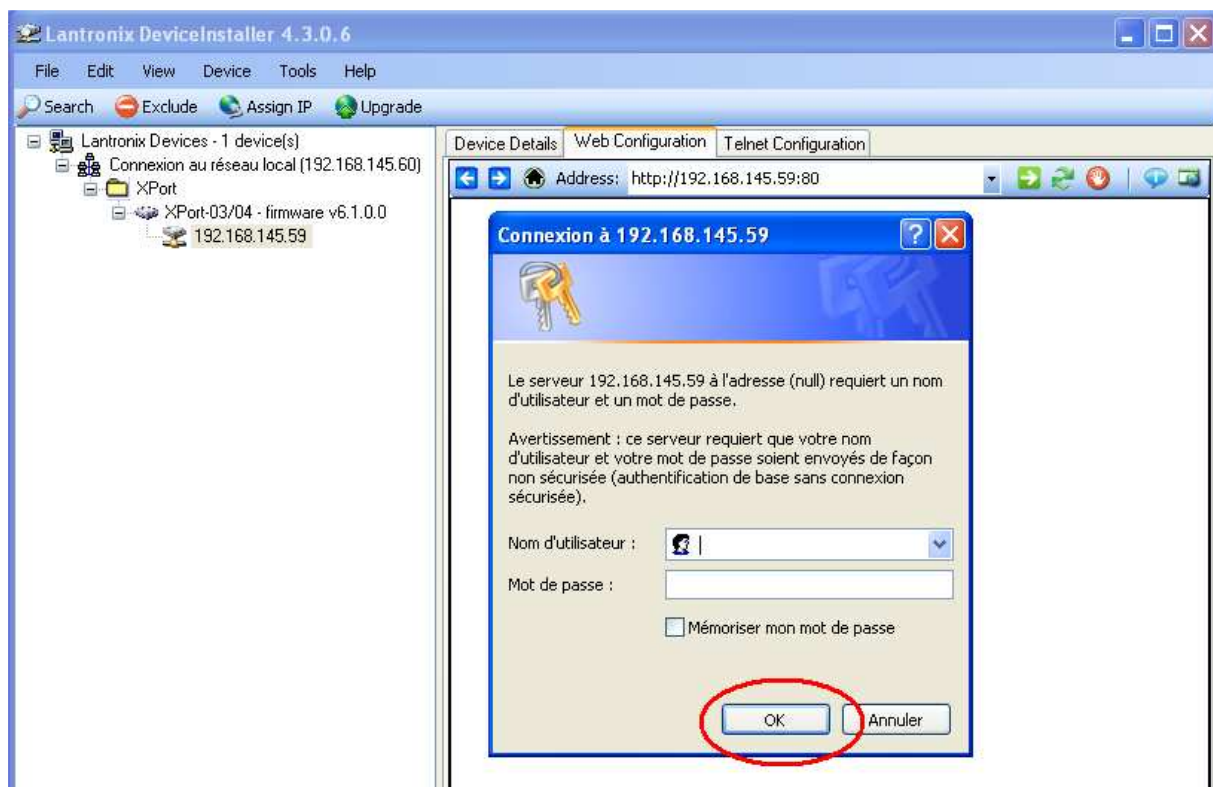
3.3. Access to the configuration procedure

In the right tab click on **Web Configuration**, and the navigation icon



If password requested directly hit

OK





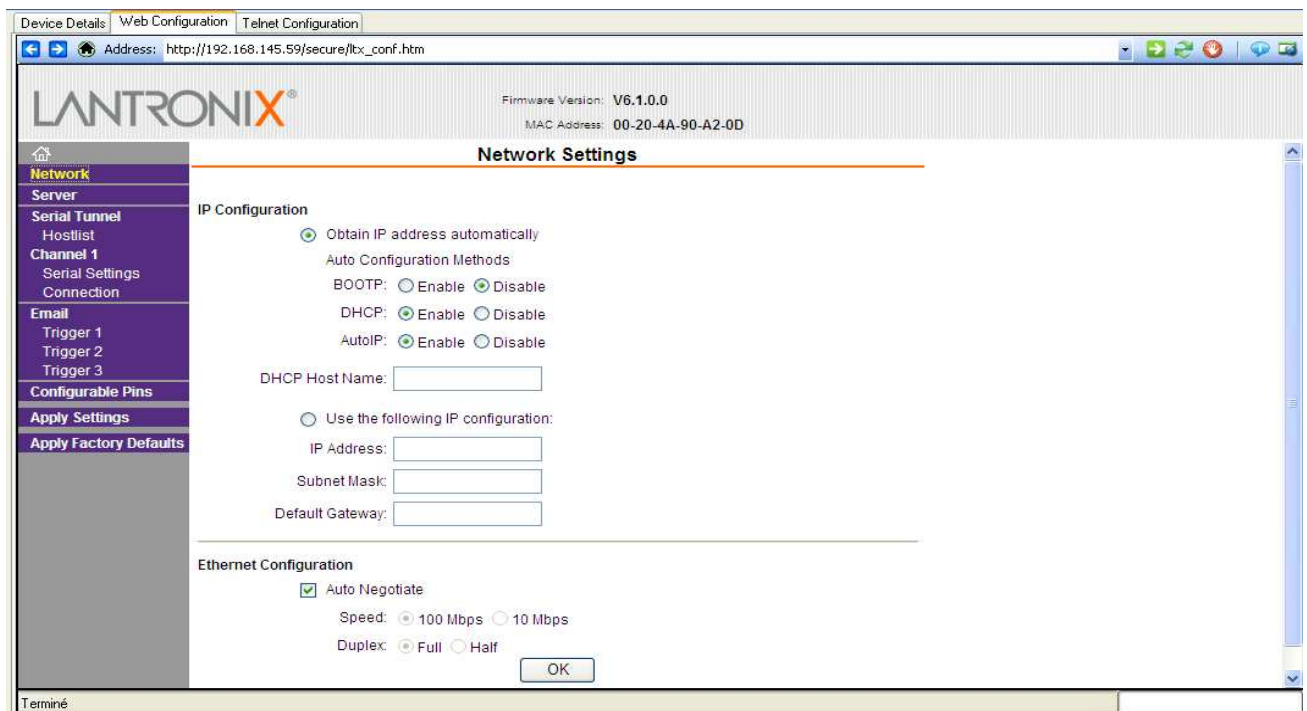
3.4. Module configuration

The following screenshots are showing you the standard configuration to be used with BMAC modules.



Tab

Network





Tab



Device Details Web Configuration Telnet Configuration

Address: http://192.168.145.59/secure/ltx_conf.htm

LANTRONIX® Firmware Version: V6.1.0.0
MAC Address: 00-20-4A-90-A2-0D

Server Settings

Server Configuration

Telnet Password:

Retype Password:

Advanced

ARP Cache Timeout (secs):

TCP Keepalive (secs):

Monitor Mode @ Bootup: ☒ Enable ☐ Disable

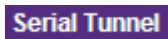
CPU Performance Mode: ☒ Regular ☐ High

HTTP Server Port:

MTU Size:

Terminé

Tab



Device Details Web Configuration Telnet Configuration

Address: http://192.168.145.59/secure/ltx_conf.htm

LANTRONIX® Firmware Version: V6.1.0.0
MAC Address: 00-20-4A-90-A2-0D

Hostlist Settings

Retry Settings

Retry Counter: Retry Timeout:

Host Information

No.	Host Address	Port	No.	Host Address	Port
1	<input type="text" value="0.0.0.0"/>	<input type="text" value="0"/>	2	<input type="text" value="0.0.0.0"/>	<input type="text" value="0"/>
3	<input type="text" value="0.0.0.0"/>	<input type="text" value="0"/>	4	<input type="text" value="0.0.0.0"/>	<input type="text" value="0"/>
5	<input type="text" value="0.0.0.0"/>	<input type="text" value="0"/>	6	<input type="text" value="0.0.0.0"/>	<input type="text" value="0"/>
7	<input type="text" value="0.0.0.0"/>	<input type="text" value="0"/>	8	<input type="text" value="0.0.0.0"/>	<input type="text" value="0"/>
9	<input type="text" value="0.0.0.0"/>	<input type="text" value="0"/>	10	<input type="text" value="0.0.0.0"/>	<input type="text" value="0"/>
11	<input type="text" value="0.0.0.0"/>	<input type="text" value="0"/>	12	<input type="text" value="0.0.0.0"/>	<input type="text" value="0"/>

<http://www.lantronix.com/>



Tab

Channel 1

Serial Settings

Choose the type of link :

RS485-2wire

or

RS232

Lantronix XPort Device Server - Windows Internet Explorer

http://192.168.145.72/secure/ltx_conf.htm

Fichier Edition Affichage Favoris Outils ?

Lantronix XPort Device Server

LANTRONIX® Firmware Version: V6.7.0.1
MAC Address: 00-20-4A-CA-63-E2

Serial Settings

Channel 1

☐ Disable Serial Port

Port Settings

Protocol: RS485 - 2 wire Flow Control: None

Baud Rate: 38400 Data Bits: 8 Parity: None Stop Bits: 1

Pack Control

☐ Enable Packing

Idle Gap Time: 12 msec

Match 2 Byte Sequence: ☐ Yes ☒ No Send Frame Immediate: ☐ Yes ☒ No

Match Bytes: 0x00 0x00 (Hex) Send Trailing Bytes: ☒ None ☐ One ☐ Two

Flush Mode

Flush Input Buffer

With Active Connect: ☐ Yes ☒ No

With Passive Connect: ☐ Yes ☒ No

At Time of Disconnect: ☐ Yes ☒ No

Flush Output Buffer

With Active Connect: ☐ Yes ☒ No

With Passive Connect: ☐ Yes ☒ No

At Time of Disconnect: ☐ Yes ☒ No

OK

Tab

Channel 1

Connection

Device Details Web Configuration Telnet Configuration

device. Address: http://192.168.145.59/secure/ltx_conf.htm

LANTRONIX® Firmware Version: V6.1.0.0
MAC Address: 00-20-4A-90-A2-00

Connection Settings

Channel 1

Connect Protocol: TCP

Connect Mode

Passive Connection: Accept Incoming: Yes Password Required: ☐ Yes ☒ No Password:

Active Connection: Active Connect: None Start Character: 0x00 (in Hex) Modem Mode: Mdm Esc Seq: ☒ Yes ☐ No Pass Thru:

Endpoint Configuration:

Local Port: 10001 ☐ Auto increment for active connect Remote Port: 0 Remote Host: 0.0.0.0

Common Options:

Telnet Mode: Disable Connect Response: None Terminal Name: Use Hostlist: ☐ Yes ☒ No LED: Blink

Disconnect Mode

http://192.168.145.59/secure/smtprtg.htm



Tab **Configurable Pins**

CP0 configuration :

type of link	Function	Direction	Active Level
RS232	General Purpose I/O	Input	High
RS485	RS485 TxEnable	Input	High

Lantronix XPort Device Server - Windows Internet Explorer

http://192.168.145.72/secure/ltx_conf.htm

Lantronix XPort Device Server

LANTRONIX®

Firmware Version: V6.7.0.1
MAC Address: 00-20-4A-CA-63-E2

Configurable Pin Settings

CP	Function	Direction	Active Level
0	RS485 TxEnable	<input type="radio"/> Input <input type="radio"/> Output	<input type="radio"/> Low <input checked="" type="radio"/> High
1	General Purpose I/O	<input checked="" type="radio"/> Input <input type="radio"/> Output	<input type="radio"/> Low <input checked="" type="radio"/> High
2	General Purpose I/O	<input checked="" type="radio"/> Input <input type="radio"/> Output	<input type="radio"/> Low <input checked="" type="radio"/> High

OK

Tab **Apply Settings**

Lantronix XPort Device Server - Windows Internet Explorer

http://192.168.145.62/secure/ltx_conf.htm

Lantronix XPort Device Server

LANTRONIX®

Firmware Version: V6.1.0.0
MAC Address: 00-20-4A-8D-8A-9A

Please wait while the configuration is saved...
The unit will reboot in order for the settings to be applied.

Progress bar: [|||||]